

SURVEYORS:  
 LOWELL DUVALL MILLER  
 & ASSOCIATES, INC.  
 P. O. BOX 906  
 CLARKESVILLE, GA. 30523  
 TELEPHONE - (706)754-9422

CERTIFICATION:  
 IN MY OPINION, THIS PLAT  
 IS A TRUE REPRESENTATION  
 OF THE LAND PLATTED AND  
 HAS BEEN PREPARED IN  
 CONFORMITY WITH MINIMUM  
 STANDARDS AND REQUIREMENTS  
 OF LAW.



11/09/00

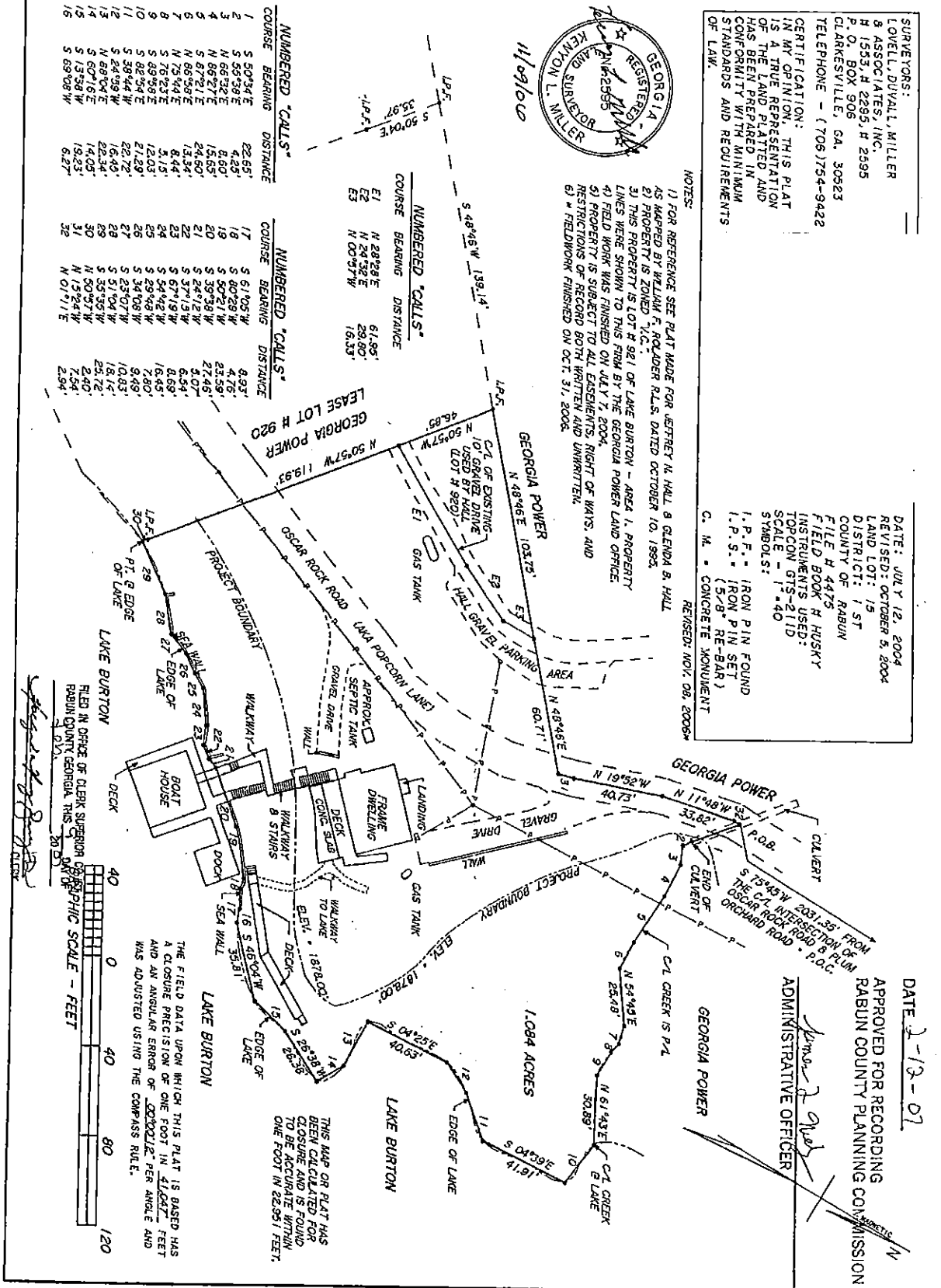
NOTES:  
 1) FOR REFERENCE SEE PLAT MADE FOR JEFFREY M. HALL & GLENDA B. HALL  
 AS MAPPED BY WILLIAM F. HOLLANDER P.L.S. DATED OCTOBER 10, 1993.  
 2) PROPERTY IS ZONED R.C.  
 3) THIS PROPERTY IS LOT H 921 OF LAKE BURTON - AREA 1, PROPERTY  
 LINES WERE SHOWN TO THIS FIRM BY THE GEORGIA POWER LAND OFFICE  
 4) FIELD WORK WAS FINISHED ON JULY 7, 2004.  
 5) PROPERTY IS SUBJECT TO ALL EASEMENTS, RIGHT OF WAYS, AND  
 RESTRICTIONS OF RECORD BOTH WRITTEN AND UNWRITTEN.  
 6) \* FIELDWORK FINISHED ON OCT. 31, 2006.

DATE: JULY 12, 2004  
 REVISED: OCTOBER 5, 2004  
 LAND LOT: 15  
 DISTRICT: 1ST  
 COUNTY OF RABUN  
 FILE # 4475  
 FIELD BOOK # HOSKY  
 INSTRUMENTS USED:  
 TOPCON GTS-211D  
 SCALE - 1" = 40'  
 I.P.F. - IRON PIN FOUND  
 I.P.S. - IRON PIN SET  
 C.M. - CONCRETE MONUMENT  
 REVISED: NOV. 26, 2006\*

NUMBERED "CALLS"		
COURSE	BEARING	DISTANCE
1	S 80°34'E	22.65'
2	S 59°26'E	8.00'
3	N 66°32'E	15.85'
4	N 66°27'E	24.80'
5	S 67°21'E	13.34'
6	N 75°54'E	8.44'
7	S 75°23'E	5.15'
8	S 89°59'E	12.03'
9	S 92°54'E	22.72'
10	S 38°44'W	16.43'
11	S 24°59'W	14.05'
12	S 60°16'W	19.23'
13	S 13°28'W	6.27'
14	S 69°08'W	
15	S 69°08'W	
16	S 69°08'W	

NUMBERED "CALLS"		
COURSE	BEARING	DISTANCE
E1	N 28°29'E	61.85'
E2	N 24°58'E	28.80'
E3	N 00°57'W	16.33'

NUMBERED "CALLS"		
COURSE	BEARING	DISTANCE
17	S 61°09'W	8.93'
18	S 80°28'W	4.76'
19	S 30°21'W	23.59'
20	S 33°38'W	27.46'
21	S 37°12'W	5.07'
22	S 47°18'W	6.34'
23	S 54°42'W	10.45'
24	S 59°59'W	18.69'
25	S 34°08'W	10.80'
26	S 23°07'W	10.83'
27	S 51°04'W	25.75'
28	S 35°35'W	21.40'
29	N 50°27'W	7.50'
30	N 12°24'W	2.94'
31	N 01°11'E	
32	N 01°11'E	



THIS MAP OR PLAT HAS BEEN CALCULATED FOR CLOSURE AND IS FOUND TO BE ACCURATE WITHIN ONE FOOT IN 22,951 FEET.

THE FIELD DATA UPON WHICH THIS PLAT IS BASED HAS A CLOSURE PRECISION OF ONE FOOT IN 41,000 FEET AND AN ANGULAR ERROR OF 0.00012 PER ANGLE AND WAS ADJUSTED USING THE COMPASS RULE.

FILED IN OFFICE OF CLERK SUPERIOR COURT OF RABUN COUNTY GEORGIA THIS 20th DAY OF JULY 2004.

APPROVED FOR RECORDING  
 RABUN COUNTY PLANNING COMMISSION  
 ADMINISTRATIVE OFFICER

DATE 2-12-07

GRAPHIC SCALE - FEET  
 0 40 80 120