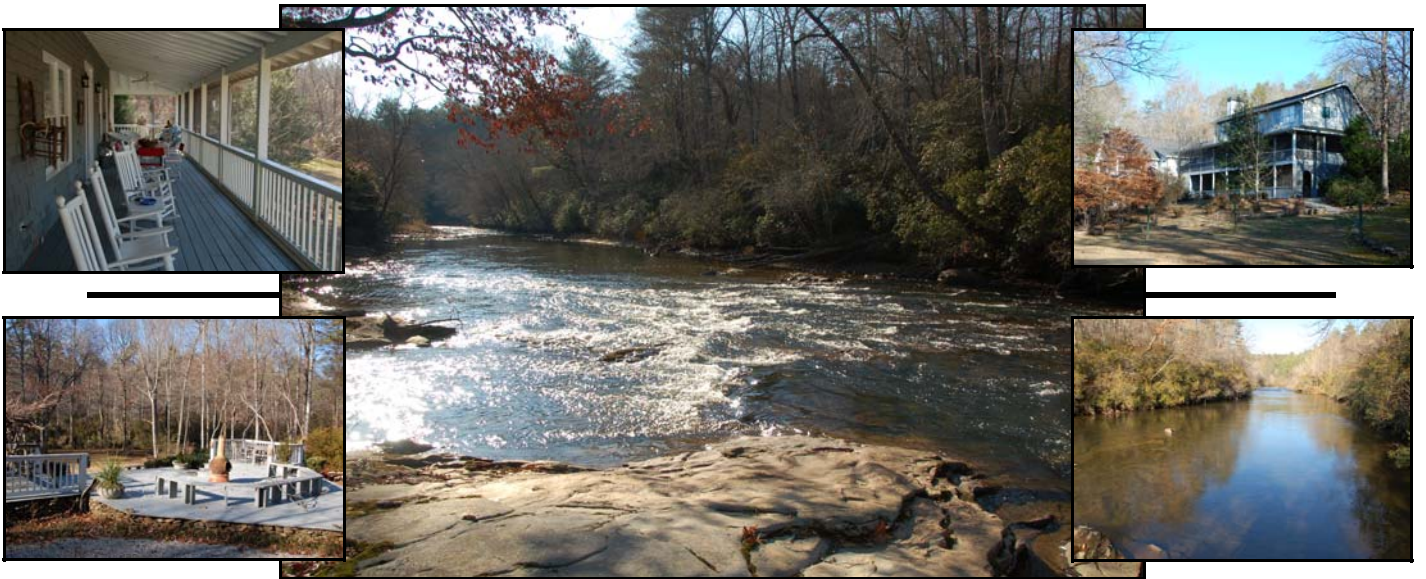


CHATTAHOOCHEE RIVER



Ten acres on the river— Magnificent architecture and dramatic floorplan with custom finishes! Five bedroom, four bath, four half-bath home with two finished terrace levels. High ceilings, pine floors, custom cabinets, three gas fireplaces, two kitchens, walk-in closets, private deck with hot tub for master bedroom, guest suite with Jacuzzi, security system, landscaped grounds, computer-controlled whole house generator, three-car garage, wrap-around front porch and many rooms with views of the river.



MLS #2576862 \$1,495,000



RE/MAX
of Rabun
Each Office Independently Owned And Operated.

851 Hwy. 441 S.
Clayton, GA 30525
www.possrealty.com

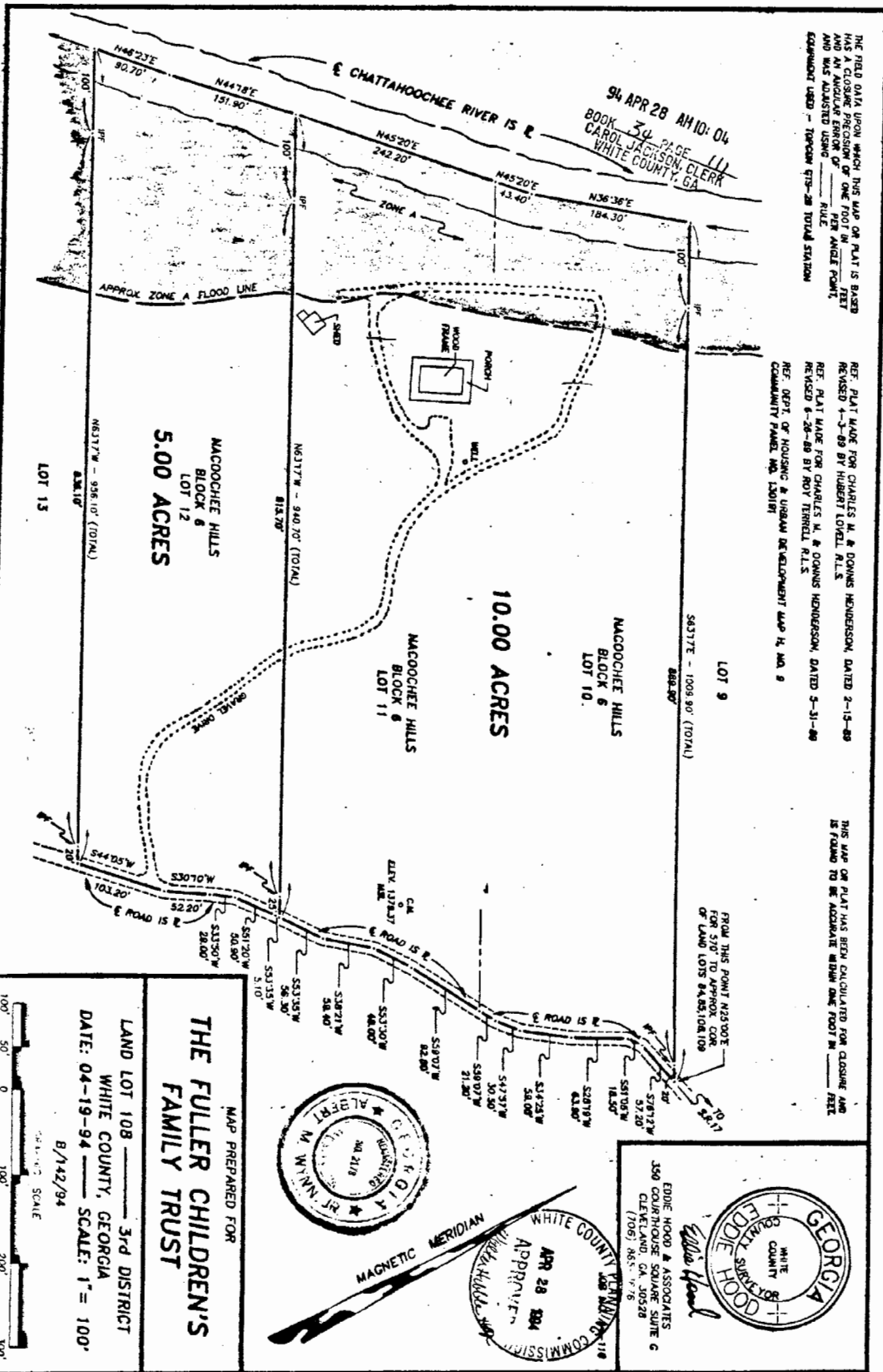
For more information contact Scott Poss
by phone at (706) 490-2305
or by e-mail at scottposs@windstream.net

THE FIELD DATA UPON WHICH THIS MAP OR PLAT IS BASED HAS A CLOSURE PRECISION OF ONE FOOT IN _____ FEET AND AN ANGULAR ERROR OF _____ PER ANGULAR POINT AND WAS ADJUSTED USING _____ RULE EQUIPMENT USED - TOPCON ET-38 TOTAL STATION

REF. PLAT MADE FOR CHARLES M. & DORIS HENDERSON DATED 3-15-88 REVISED 4-3-88 BY HUBERT LOVELL, P.L.S.
 REF. PLAT MADE FOR CHARLES M. & DORIS HENDERSON DATED 5-31-88 REVISED 6-26-88 BY ROY TERRELL, P.L.S.
 REF. DEPT. OF HOUSING & URBAN DEVELOPMENT MAP H, MAP 9 COMMUNITY PANEL NO. 120181

THIS MAP OR PLAT HAS BEEN CALCULATED FOR CLOSURE AND IS FOUND TO BE ACCURATE WITHIN ONE FOOT IN _____ FEET

94 APR 28 AM 10: 04
 BOOK 34 PAGE 111
 CAROL JACKSON, CLERK
 WHITE COUNTY, GA



FROM THIS POINT N25300E FOR 510' TO APPROX. COR. OF LAND LOTS 8 & 9, 10 & 11



EDDIE HOOD & ASSOCIATES
 350 COLLEGE SQUARE SUITE 6
 CLARKSBURG, GA 30628
 (706) 865-7176

MAP PREPARED FOR
**THE FULLER CHILDREN'S
 FAMILY TRUST**

LAND LOT 108 - 3rd DISTRICT
 WHITE COUNTY, GEORGIA
 DATE: 04-19-94 SCALE: 1" = 100'
 B/142/94

